

For Supervisor's use only

1

90179



NEW ZEALAND QUALIFICATIONS AUTHORITY  
MANA TOHU MĀTAURANGA O AOTEAROA



National Certificate of Educational Achievement  
TAUMATA MĀTAURANGA Ā-MOTU KUA TAEA

## Level 1 Human Biology, 2005

### 90179 Describe functioning of the human reproductive system

Credits: Three

9.30 am Thursday 24 November 2005

Check that the National Student Number (NSN) on your admission slip is the same as the number at the top of this page.

You should answer ALL the questions in this booklet.

If you need more space for any answer, use the page(s) provided at the back of this booklet and clearly number the question.

Check that this booklet has pages 2–10 in the correct order and that none of these pages is blank.

**YOU MUST HAND THIS BOOKLET TO THE SUPERVISOR AT THE END OF THE EXAMINATION.**

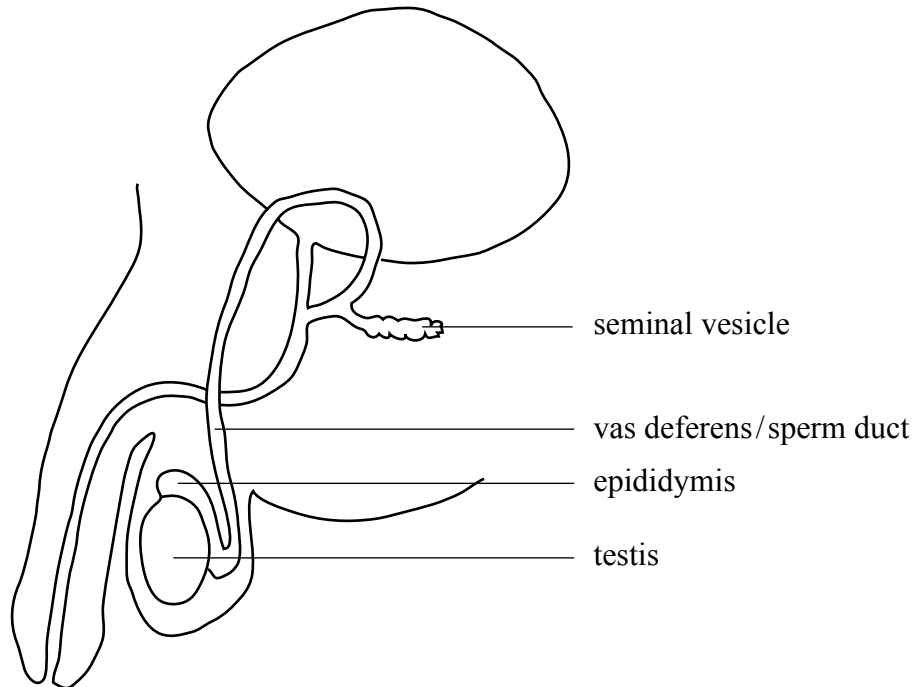
| <i>For Assessor's use only</i>                               |                          |   |                                    |
|--|--------------------------|---|------------------------------------|
| <b>Achievement Criteria</b>                                  |                          |   |                                    |
| <b>Achievement</b>   |                          | <b>Achievement with Merit</b>                         |                                    |
|  |                          |   | <b>Achievement with Excellence</b> |
| Describe functioning of the human reproductive system.       | <input type="checkbox"/> | Explain functioning of the human reproductive system. | <input type="checkbox"/>           |
|  |                          | Discuss functioning of the human reproductive system. | <input type="checkbox"/>           |
| <b>Overall Level of Performance</b> <input type="checkbox"/> |                          |   |                                    |

This page has been deliberately left blank.

You are advised to spend 30 minutes answering the questions in this booklet.

### QUESTION ONE

The diagram below shows a side view of a human male reproductive system.

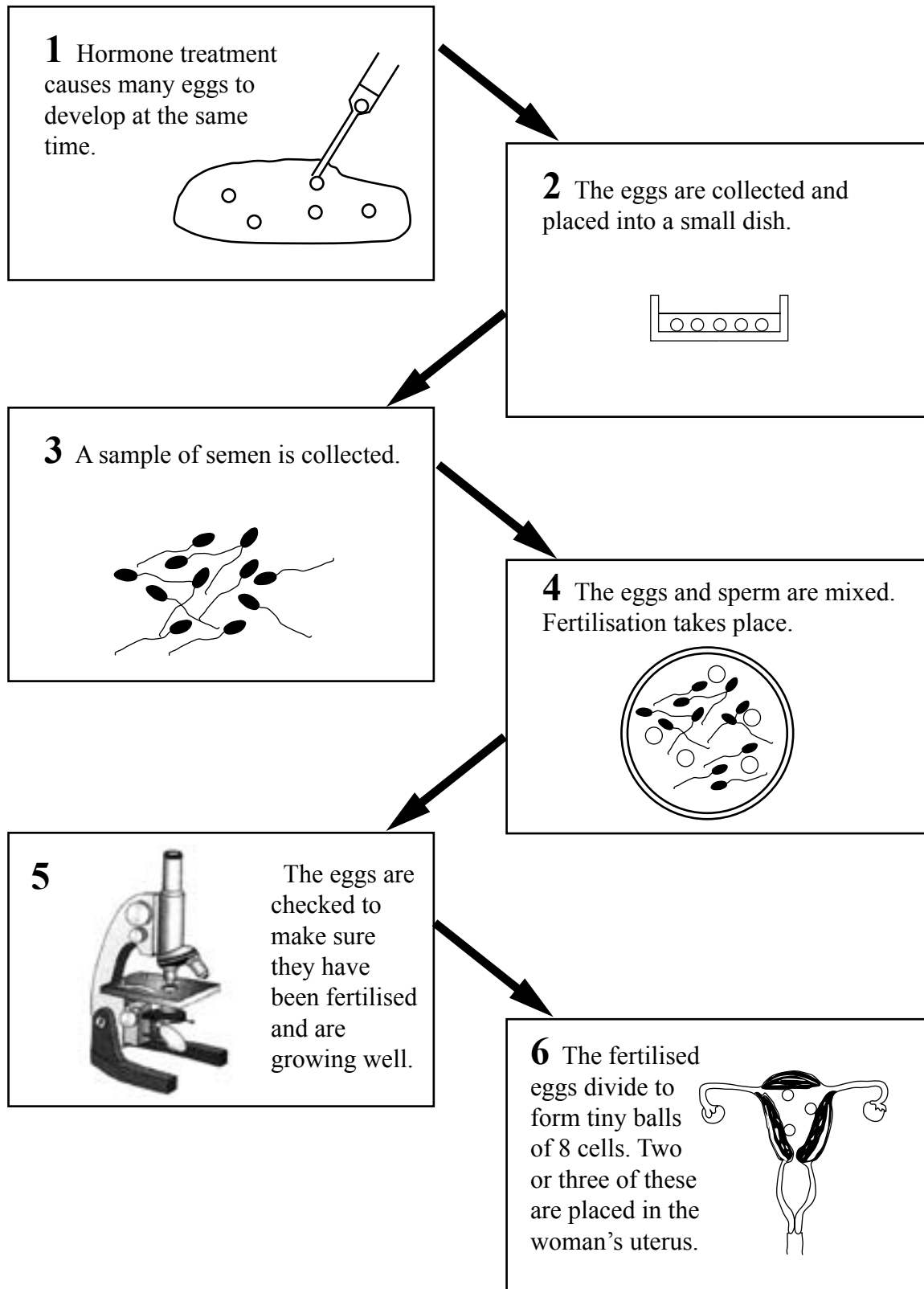


Describe the function of each of the following parts.

| Part            | Function |
|-----------------|----------|
| Testis          |          |
| Vas deferens    |          |
| Epididymis      |          |
| Seminal vesicle |          |

**QUESTION TWO**

The diagrams below outline the steps required to help a couple have a baby when the woman has discovered that both her oviducts (fallopian tubes) are blocked.



- (a) Step 1 on page 4 illustrates the development of many eggs. State **where** this occurs in a woman's body.

---

---

- (b) What is semen made up of ?

---

---

- (c) Explain what happens when **fertilisation** takes place.

---

---

---

---

- (d) Explain why TWO or THREE **embryos** (the tiny balls of 8 cells) are placed into the uterus as shown in step 6 of the diagram.

---

---

---

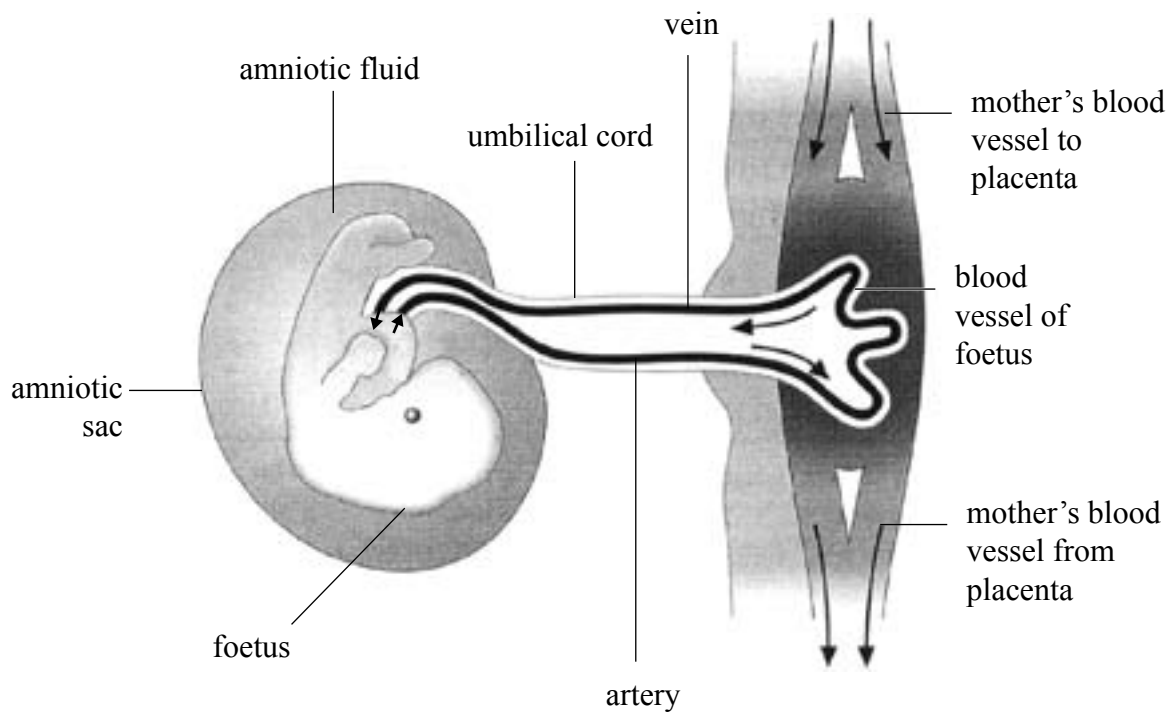
---



## QUESTION FOUR

Assessor's  
use only

## A foetus and the placenta



- (a) Describe the function of the amniotic fluid.

---



---

- (b) Describe the function of the **vein** in the umbilical cord.

---

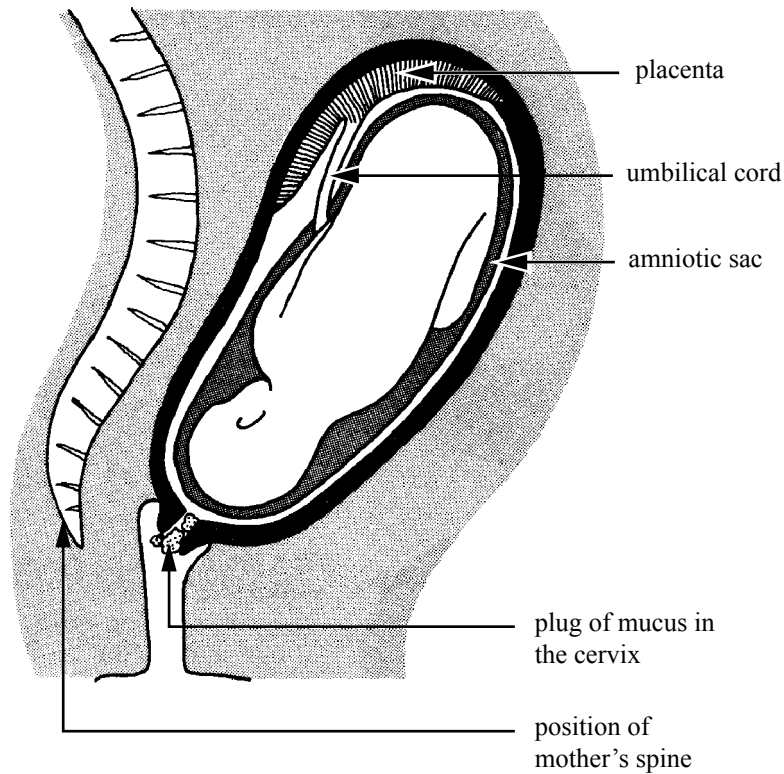


---



## QUESTION FIVE

The diagram below shows a baby just before birth.



- (a) At the start of labour the waters break.  
Explain what happens inside the mother's body for the waters to break.

---



---



---

- (b) Describe TWO changes that occur in the **mother's reproductive system** during **delivery** of the baby.

You will need to refer to specific body parts.

Do **not** refer to "the waters break" in your answer.

---



---



---



---





